

Girl Scout Office

THE HANDBOOK FOR

BROWNIES

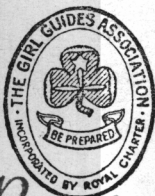
OR

BLUE BIRDS

MONTEREY PENINSULA GIRL SCOUTS

BY

LORD BADEN-POWELL OF GILWELL.



Property of

ALL RIGHTS RESERVED
**MONTEREY PENINSULA COUNCIL
OF GIRL SCOUTS, INC.**

**404 EL ESTERO
MONTEREY, CALIFORNIA**

C. ARTHUR PEARSON, LTD.

HENRIETTA STREET, W.C. 2

PRICE SIXPENCE NET.

<i>First Edition</i>	1920
<i>Second Edition</i>	1921
<i>Third Edition</i>	1922
<i>Fourth Edition</i>	1924
<i>Fifth Edition</i>	1926
<i>Sixth Edition</i>	1927
<i>Seventh Edition</i>	1928
<i>Eighth Edition</i>	1929
<i>Ninth Edition</i>	1930
<i>Tenth Edition</i>	1933

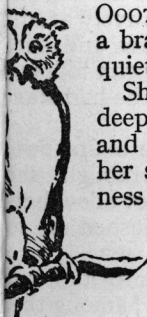
Printed in Great Britain by
Miller, Son & Comp., Fakenham and London

BROWNIES

CHAPTER I

THE STORY OF THE BROWNIES

(Adapted from *The Brownies*, by Mrs. Ewing.)



Ooot-toot-to-hoo!—A dear old brown owl sat on a branch in the soft moonlight crooning that cry quietly to herself.

She was a warm, soft old thing, with great big deep eyes that could see even through the dark, and though many people were rather afraid of her she was really quite harmless, full of kindness and also full of fun.

She could see a joke, and her "Oot-toot-to-hoo" often rippled away in gurgling laughter.

.

a little house near by there lived a poor man and his wife their two children, Tommy and Betty; and though her loved both the children, she was always having to find with them because they were lazy and forgetful and shy.

They used to rush about the place yelling and playing their games, upsetting the furniture, breaking the crockery, spoiling clothes, and generally making themselves a trouble.

As long as they had a good time they never thought what a bother they were to other people.

One day Mother told them one day how different it had been in those days in years gone by when the Brownies had been there. "What is a Brownie?" they asked.

"The Brownie," answered Mother, "was a little, wee fairy,



BROWN OWLS

BE SURE YOUR
BROWNIE
 BUY THEIR
UNIFORM
 AT
HEADQUARTERS

YOU WILL
 THEN KNOW
 THEY ARE G
 CORRECT UN
 AT A
 REASONABLE
 MADE
 GOOD MAT

THE GIRL GUIDES ASSOCIATION

(INCORPORATED BY ROYAL CHARTER)

17-19, Buckingham Palace
 - - LONDON, S.W.1

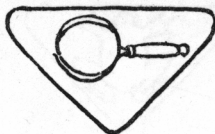
Branch Shops—

8, St. John's Lane, Liverpool ; 17, Imperial Arcade, Dale End, Bir-
 ham ; 37, The Headrow, Leeds ; 352-4, Gray's Inn Road, London,
 50, Moorgate, London, E.C.2.

GROUP 1.—INTELLIGENCE (BLUE).



Booklover.



Collector.



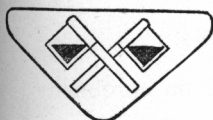
Jester.



Observer.



Musician.



Signaller.

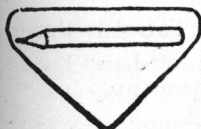


Thrift.

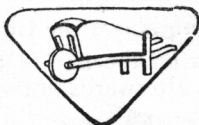


Writer.

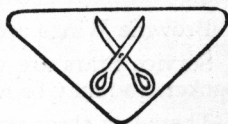
GROUP 2.—HANDCRAFT (YELLOW).



Artist.



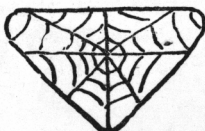
Gardener.



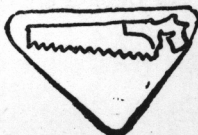
Needlework.



Toymaker.



Weaver.



Woodworker.